

[Jump to Website](#)

[Request Quote](#)

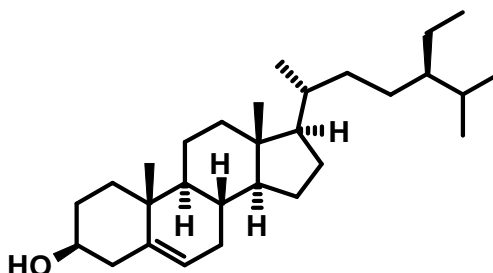
## Product Specifications

### **$\beta$ -Sitosterol**

**CAS** 83-46-5

**Syn:** 24 $\beta$ -Ethylcholesterol; 22:23-Dihydrostigmasterol;  $\alpha$ -Dihydrofucosterol;  $\Delta^5$ -Stigmasten-3 $\beta$ -ol;  $\alpha$ -Phytosterol

**Structure:**



**Mol. Formula**  
**Source**

**C<sub>29</sub>H<sub>50</sub>O**  
Soya beans

**Mol. Wt.**

**414.7**

<i>Test</i>	<i>Specification</i>
<b>Identity</b>	IR
<b>Appearance</b>	White microcryst. solid
<b><math>\beta</math>-Sitosterol (glpc, area%)</b>	> 80%
Campesterol	< 10%
Stigmasterol	< 5%
Brassicasterol	< 0.5%
<b>Unidentified Impurities</b>	
1) RRT, 0.96	< 1%
2) RRT, 1.04	< 1%
<b>LOD</b>	< 2%
<b>Ash (residue on ignition)</b>	< 1%
<b>Heavy metals (Pb)</b>	<10 ppm
As	< 5 ppm
<b><u>Microbiological Specifications</u></b>	
<b>Total Plate Count</b>	< 100 CFU/g
<b>E. Coli</b>	Negative
<b>Salmonella</b>	Negative
<b>Yeast &amp; Mold</b>	< 100 CFU/g

**Storage:** Maintain in cool, dry containment.