

[Jump to Website](#)

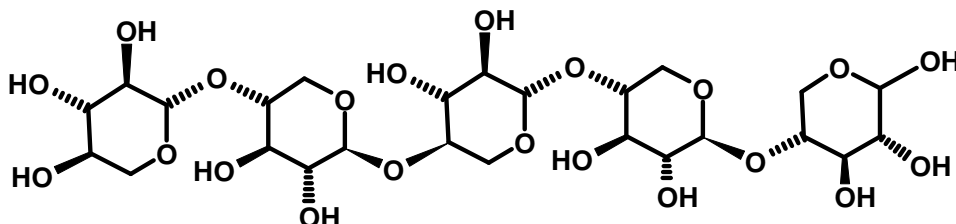
[Request Quote](#)

Product Specifications

Xylopentose

CAS 49694-20-4

Structure:



Mol. Formula
Source

$C_{25}H_{42}O_{21}$
Synthetic

Mol. Wt.

678.59

Test

Specification

Identity	IR
Appearance	White microcryst. solid
Mp	240°C - 242 °C (lit.)
Assay (hplc)	> 98 %
Sp. Rot., $[\alpha]_D$	-72.9° (c = 4, H ₂ O) (lit.)
LOD	< 1%
Ash (residue on ignition)	< 0.1%
Heavy metals	< 10 ppm

Storage: Maintain in cool, dry containment.