

[Jump to Website](#)

[Request Quote](#)

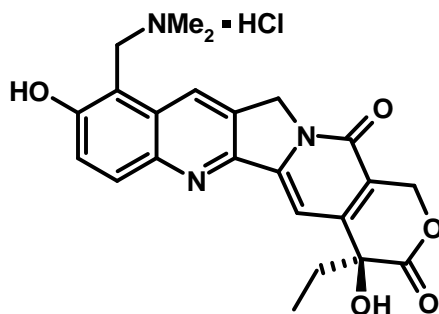
Product Specifications

Topotecan Hydrochloride

CAS 119413-54-6

Syn: Hycamtin; 9-(Dimethylamino)methyl-10-hydroxycamptothecin·HCl

Structure:



Mol. Formula
Source

$C_{23}H_{23}N_3O_5 \cdot HCl$
Semi-synthetic

Mol. Wt.

457.91

Test

Specification

Appearance	Pale-yellow to greenish powder
Mp	213 -218 °C (dec.)
Assay (hplc)	> 98%
Sp. Rot., [α] _D	N/A
LOD	< 3 %
Heavy metals	< 10 ppm

Storage: Maintain in cool, dry containment.