

[Jump to Website](#)

[Request Quote](#)

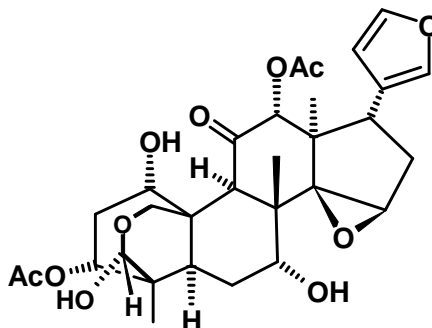
Product Specifications

Toosendanin

CAS 58812-37-6

Syn: 28-Deacetylsendanin; Chuanliansu

Structure:



Mol. Formula
Source

$C_{30}H_{38}O_{11}$
Melia azedarach L., *Melia Toosendanin* Sieb. et Zucc

Mol. Wt.

574.62

<i>Test</i>	<i>Specification</i>
Identity	IR
Appearance	White to pale-yellow microcryst. solid
Mp	273 - 276 °C [Lit.]
Assay (hplc)	> 98 %
Sp. Rot., $[\alpha]_D$	+2 ° (c = 0.1; CHCl ₃)
LOD	< 0.5%
Ash (residue on ignition)	< 0.2%
Heavy metals	< 10 ppm

Storage: Maintain in cool, dry containment.