

[Jump to Website](#)

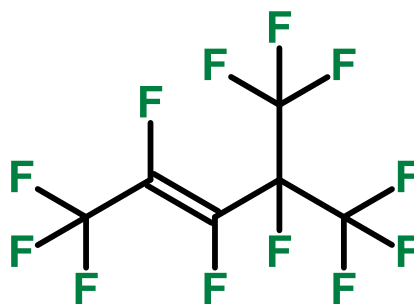
[Request Quote](#)

Product Specifications

Perfluoro(4-methylpent-2-ene)

CAS 2070-70-4

Structure:



Mol. Formula
Source

C₆F₁₂
Synthetic

Mol. Wt.

300.05

Test

Specification

Identity	IR
Appearance	Colorless liquid
Bp	49 °C /760 mmHg
Purity (glpc)	> 99%
Perfluoro(4-methylpent-2-ene)	94-95%
Perfluoro-2-methyl-2-pentene	5-6%
Moisture (K-F)	< 0.5%
d_{20 °C}	1.610 g/mL

Storage: Maintain in cool, dry containment.