

[Jump to Website](#)

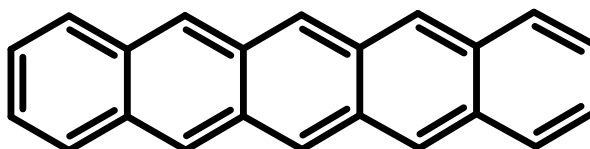
[Request Quote](#)

Product Specifications

Pentacene

CAS 135-48-8

Structure:



Mol. Formula
Source

$C_{22}H_{14}$
Synthetic

Mol. Wt.

278.36

<i>Test</i>	<i>Specification</i>
Identity	IR
Appearance	Purple powder
Mp	> 300 °C [Lit.]
Assay (hplc)	> 99%
LOD	< 0.3%
Ash (residue on ignition)	< 0.2%
Heavy metals	< 10 ppm

Storage: Maintain in cool, dry containment.