

[Jump to Website](#)

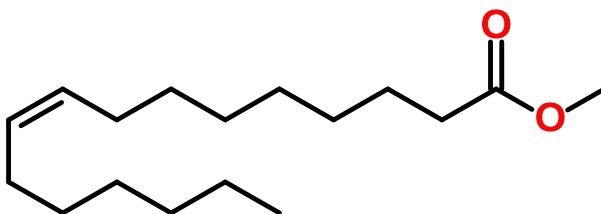
[Request Quote](#)

Product Specifications

Methyl Palmitoleate

CAS 1120-25-8

Structure:



Mol. Formula	C ₁₇ H ₃₂ O ₂	Mol. Wt.	268.43
Source	Synthetic		
Size	100mg-10g		

<i>Test</i>	<i>Specification</i>
Identity	IR
Appearance	Colorless clear liquid
Mp	-0.5 - 0.5 °C (lit.)
Bp	180-183 °C/1 mm Hg (lit.)
Purity (glpc)	> 98%
Moisture (K-F)	< 0.5%
d ₂₀ °C	0.876±0.06 g/mL
RI, η _D ²⁰ °C	1.451(lit.)
Fp	> 80 °C

Storage: Maintain in cool, dry containment.