

[Jump to Website](#)

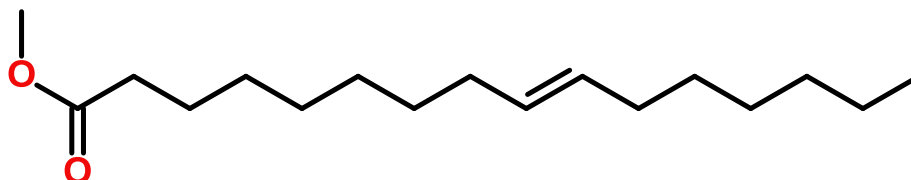
[Request Quote](#)

Product Specifications

Methyl Palmitelaidate

CAS 10030-74-7

Structure:



Mol. Formula	C ₁₇ H ₃₂ O ₂	Mol. Wt.	268.43
Source	Synthetic		
Size	100mg-10g		

<i>Test</i>	<i>Specification</i>
Identity	IR
Appearance	Colorless to pale-yellow liquid
Bp	394.2 °C, Calc.
Purity (glpc)	> 98%
Moisture (K-F)	< 0.5%
$d_{20}^{\circ\text{C}}$	0.876±0.06 g/mL
RI, $\eta_D^{20\text{ }^{\circ\text{C}}}$	N/A
Fp	92.5±20.4 °C, Calc.

Storage: Maintain in cool, dry containment.