

[Jump to Website](#)

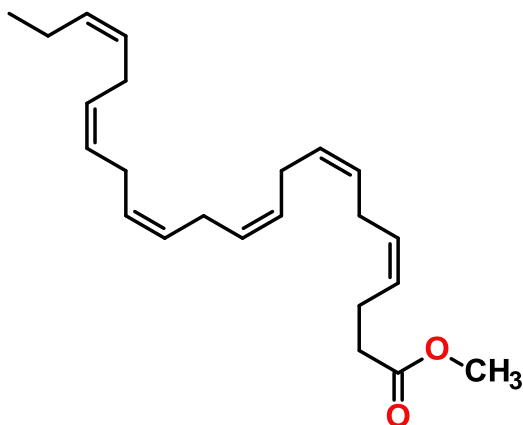
[Request Quote](#)

Product Specifications

Methyl Docosahexaenoate

CAS 2566-90-7

Structure:



Mol. Formula	C ₂₃ H ₃₄ O ₂	Mol. Wt.	342.51
Source	Synthetic		
Size	100mg-10g		

Test

Specification

Identity	IR
Appearance	Colorless to faint yellow liquid
Bp	> 300 °C
Purity (glpc)	> 98%
Moisture (K-F)	< 0.5%
d ₂₀ °C	0.917 g/mL
RI, η _D ²⁰ °C	1.4959 (589.3 nm/20 °C)
Fp	> 100 °C

Storage: Maintain in dry containment at -20 °C.