

[Jump to Website](#)

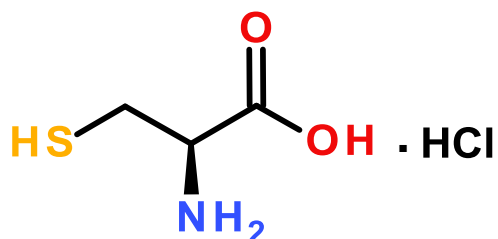
[Request Quote](#)

## Product Specifications

### **L-Cysteine Hydrochloride (anhydrous)**

**CAS** 52-89-1

**Structure:**



**Mol. Formula**  
**Source**

**C<sub>6</sub>H<sub>8</sub>NO<sub>2</sub>SCI**  
*Synthetic*

**Mol. Wt.**

**157.62**

<i>Test</i>	<i>Specification</i>
<b>Identity</b>	FT-IR
<b>Appearance</b>	White to off-white microcryst. solid
<b>Solubility</b> (50 mg/mL, H <sub>2</sub> O)	Clear, colors solution
<b>Assay</b> (titration)	98-102%
<b>pH</b> (1%, H <sub>2</sub> O)	1.5-2.0
<b>Sp. Rot., [α]<sub>D</sub></b>	5.6-8.9°(c=8 in 1MT HCl)
<b>LOD</b>	≤ 1%
<b>Ash</b> (residue on ignition)	≤ 0.1%
<b>Heavy metals</b>	≤ 10 ppm
<b>As</b>	≤ 1 ppm
<b>Ninhydrin-positive Substances</b>	Conforms
<b>Endotoxin</b>	≤ 1 EU/mg
<b>Cell Culture test</b>	Conforms

*Storage:* Maintain in cool, dry, dark containment.