

[Jump to Website](#)

[Request Quote](#)

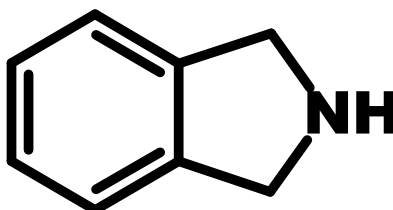
## Product Specifications

### Isoindoline

CAS 496-12-8

Syn: 2,3-Dihydro-1H-isoindole; 2-Azaindane

Structure:



Mol. Formula  
Source

C<sub>8</sub>H<sub>9</sub>N  
Synthetic

Mol. Wt.

119.16

<i>Test</i>	<i>Specification</i>
Identity	IR
Appearance	Pale yellow liquid or off-white cast solid
Mp	17 °C (lit.)
Bp	221 °C (lit.)
Assay (glpc)	> 98%
LOD	< 1%
$d_{25}^{\circ C}$	1.05 g/mL (lit.)
RI, $\eta_D^{20\text{ }^{\circ C}}$	1.57 (lit.)
Fp	94 °C

*Storage:* Maintain in cool, dry containment.