

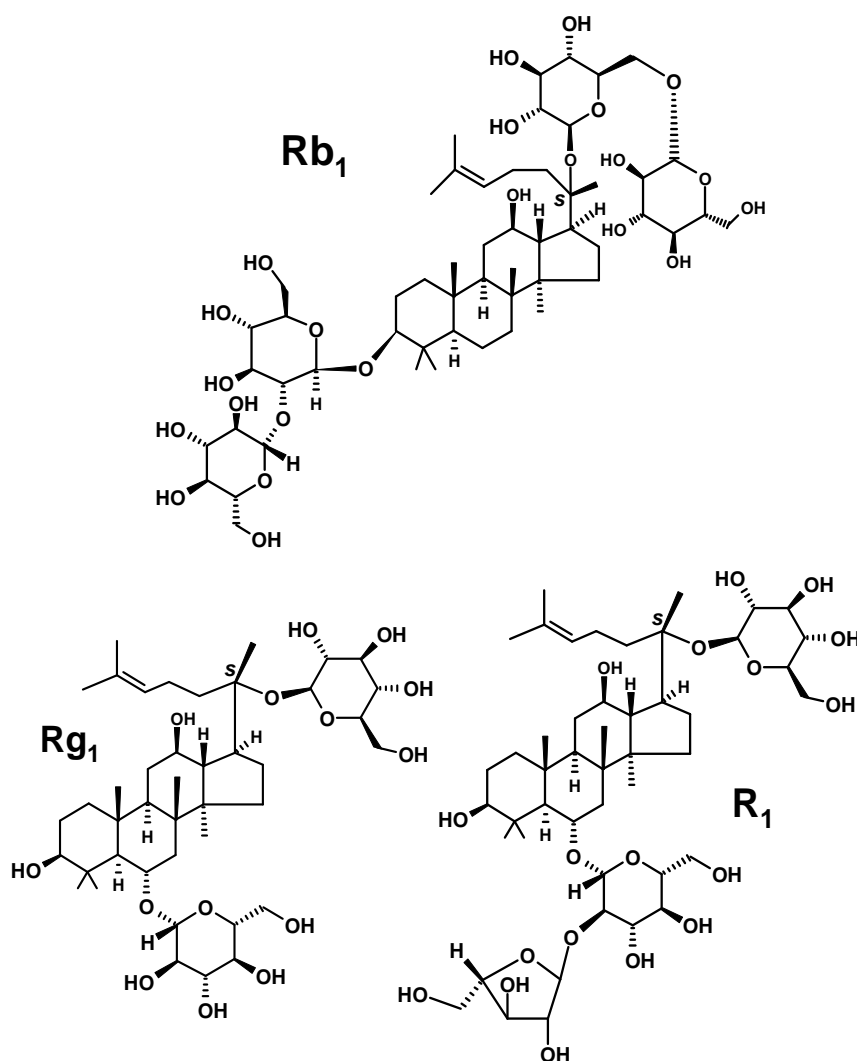
[Jump to Website](#)

[Request Quote](#)

Product Specifications

Ginsenosides Rb₁ + Rg₁ + R₁ (isolated from *root*)

Structure:



Source *Panax ginseng* C.A. Mey., Araliaceae (Root)

Rb₁: ≥ 30%
Rg₁: ≥ 30%
R₁: ≥ 6%

TOTAL Ginsenoside content: 65-80%

<i>Test</i>	<i>Specification</i>
Appearance	Pale-yellow powder (<i>root</i>)
Assay (hplc)	As noted above
LOD	< 3%
Ash (residue on ignition)	< 0.2%
Heavy metals	< 10 ppm
Microbiological	
Bacteria	< 100 cfu/g
Mold	< 100 cfu/g

Storage: Maintain in cool, dry containment.

Shelf-life: Three years.

Packaging: Pharmaceutical pail or as requested.