

[Jump to Website](#)

[Request Quote](#)

## Product Specifications

### Ginsenoside Rg<sub>3</sub>

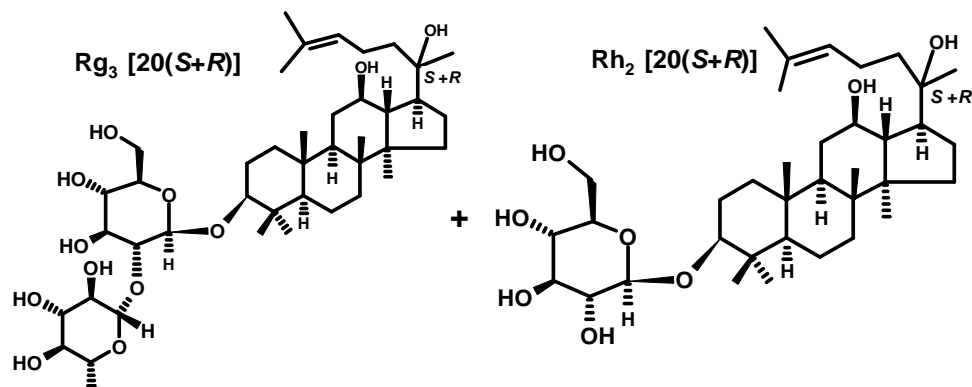
+

### Ginsenoside Rh<sub>2</sub>

CAS 14197-60-5 (20-S enantiomer)  
38243-03-7 (20-R enantiomer)

78214-33-2 (20-S enantiomer)  
112246-15-8 (20-R enantiomer)

Structure:



Mol. Formula  
Plant Origin  
Source

$C_{42}H_{72}O_{13}$   
*Panax ginseng* C.A. Mey., Araliaceae  
Leaves

Mol. Wt.

$C_{36}H_{62}O_8$

---

---

### Test

### Specification

---

---

Appearance	Off-yellow powder
Assay (hplc)	Rg <sub>3</sub> : > 60% Rh <sub>2</sub> : > 30%
TOTAL Ginsenoside content:	> 90% (lower grades available)
LOD	< 1.5%
Heavy metals	< 10 ppm

---

*Storage:* Maintain in cool, dry containment.

**Wilshire Technologies**

**TEL: +1- 609-683-1117**