

[Jump to Website](#)

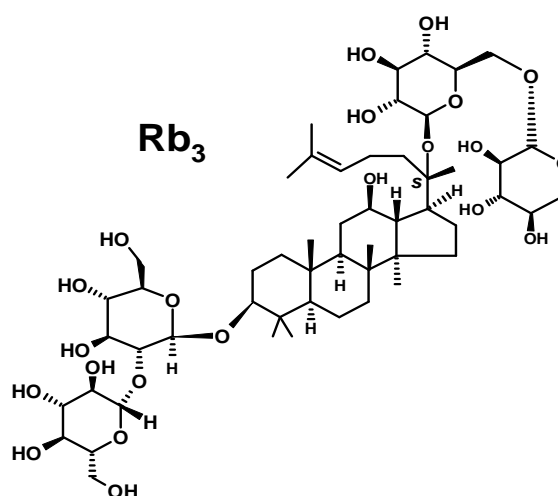
[Request Quote](#)

Product Specifications

Ginsenoside Rb₃

CAS 68406-26-8

Structure:



Mol. Formula
Source

$C_{53}H_{90}O_{22}$
Panax ginseng C.A. Mey., *Araliaceae*

Mol. Wt.

1079.2

<i>Test</i>	<i>Specification</i>
-------------	----------------------

Identity	IR
Appearance	Cream to beige powder
Mp	> 250 °C [Lit.]
Assay (hplc)	> 95 %
LOD	< 0.5 %
Ash (residue on ignition)	< 0.2 %
Heavy metals	< 10 ppm

Storage: Maintain in cool, dry containment.

Wilshire Technologies

TEL: +1- 609-683-1117