

[Jump to Website](#)

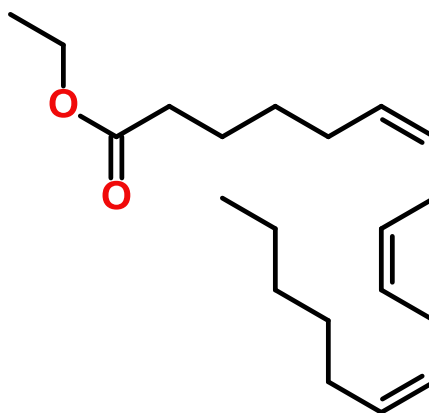
[Request Quote](#)

Product Specifications

Ethyl gamma-Linolenate

CAS 31450-14-3

Structure:



Mol. Formula C₂₀H₃₄O₂
Source Borage Oil

Mol. Wt. 306.48

Size 1g-10kg

<i>Test</i>	<i>Specification</i>
Identity	IR
Appearance	Clear, pale yellow liquid
Purity (glpc)	> 98%
Moisture (K-F)	< 0.5%
$d_{20}^{\circ C}$	0.893 g/mL
Fp	100 °C

Storage: Maintain in cool, dry containment.