

[Jump to Website](#)

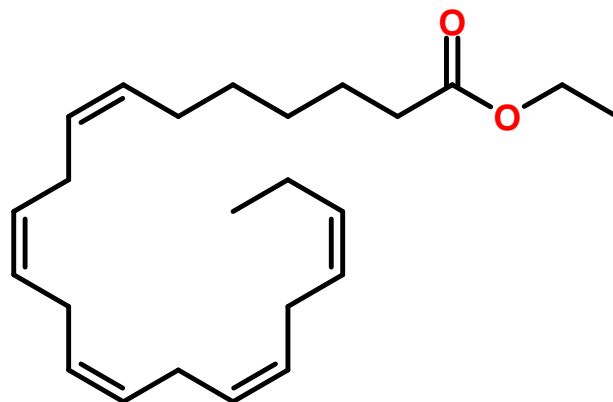
[Request Quote](#)

Product Specifications

Ethyl 2,4,6,8,10,12-Docosahexaenoate

CAS 1020718-25-5

Structure:



Mol. Formula
Source

$C_{24}H_{36}O_2$
Synthetic

Mol. Wt.

356.54

<i>Test</i>	<i>Specification</i>
Identity	IR
Appearance	Colorless to pale-yellow liquid
Bp	130-132 °C / 4 mm Hg
Purity (glpc)	> 98%
Moisture (K-F)	< 1%
$d_{20}^{\circ C}$	0.914±0.06 g/mL
RI, $\eta_D^{20}^{\circ C}$	1.49
Fp	263.6 °C

Storage: Maintain in dry containment at or below -20 °C.