

[Jump to Website](#)

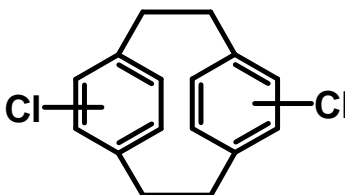
[Request Quote](#)

## Product Specifications

### Dichloro[2.2]paracyclophane

CAS 28804-46-8

Structure:



Mol. Formula  
Source

$C_{16}H_{14}Cl_2$   
*Synthetic*

Mol. Wt.

277.12

---

#### *Test*

#### *Specification*

---

Appearance	White crystalline powder
Mp	182-185 °C
Assay	≥ 99%
Residual Ash	< 0.2%
Heavy metals	< 10 ppm

---

*Storage:* Maintain in cool, dry containment.