

[Jump to Website](#)

[Request Quote](#)

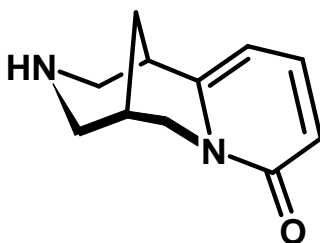
Product Specifications

Cytisine

CAS 485-35-8

Syn: (1*R*,5*S*)-1,2,3,4,5,6-Hexahydro-1,5-methanopyrido(1,2-*a*)-(1,5)diazocin-8-one; Baptitoxine; Sophorine

Structure:



Mol. Formula
Source

C₁₁H₁₄N₂O
Synthetic

Mol. Wt.

190.27

Test

Specification

Identity	IR
Appearance	Off-white to tan microcryst solid
Mp	154-156 °C [Lit.]
Assay (hplc)	> 99%
Sp. Rot., [α]_D	- 108 ± 3°, c = 1% (EtOH)
LOD	< 0.5%
Ash (residue on ignition)	< 0.2 %
Heavy metals	< 10 ppm

Storage: Maintain in cool, dry containment.

Wilshire Technologies

TEL: +1- 609-683-1117