

[Jump to Website](#)

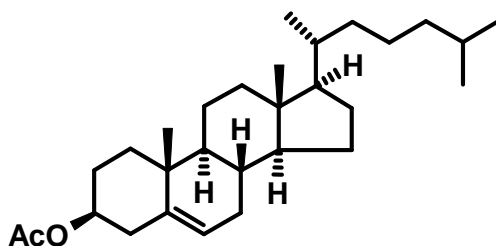
[Request Quote](#)

Product Specifications

Cholesteryl Acetate (vegetal-derived; semi-synthetic)

CAS 604-35-3

Structure:



Mol. Formula
Source

$C_{29}H_{48}O_2$
Saponin-derived, semi-synthetic

Mol. Wt.

428.70

<i>Test</i>	<i>Specification</i>
Identity	IR
Appearance	White, microcryst. solid
Mp	114-117 °C
Assay (hplc)	> 99%
Impurities (hplc)	
O-Methylcholesterol	< 25 ppm
Cholesteryl Chloride	< 25 ppm
Total Impurities	< 200 ppm
Sp. Rot., [α]_D	- 43.0° to -45° (c = 2.0, CHCl ₃)
Sulfated Ash	< 0.1%
LOD (90 °C, 4h)	≤ 0.5%
Heavy metals	< 10 ppm

Storage: Maintain in cool, dry containment.