

[Jump to Website](#)

[Request Quote](#)

Product Specifications

PhytoChol[®] (animal-origin free, vegetal-derived Cholesterol)

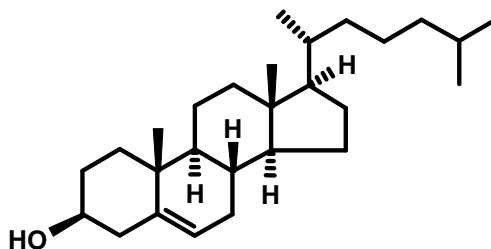
CAS 57-88-5

EINECS 200-353-2

Syn: Cholesterol; 3 β -Cholest-5-en-3-ol

Grade: Pharmaceutical; cGMP

Structure:



Mol. Formula

C₂₇H₄₆O

Mol. Wt.

386.66

Source

Vegetal-derived, semi-synthetic

Retest Date

3 years

<i>Test</i>	<i>Specification</i>
-------------	----------------------

Identity

EP, IR

Appearance

White crystalline solid

Mp

147-150 °C (EP 0993)

TLC

EP 0993

Color Test

EP 0993

Purity (area %)

≥ 99.5%

Assay (EP)

98.0-102.0%

Sp. Rot., [α]_D

-39.0 ° to -41.0 ° (c = 2.0, CHCl₃)

- cont'd -

- cont'd -

<i>Test</i>	<i>Specification</i>	
LOD	≤ 0.3%	(EP 0993)
Sulfated Ash	≤ 0.1%	(EP 0993)
Acidity	≤ 0.3 mL of 0.1 M HCl (EP 0993)	
Peroxide value	≤ 10	
Solubility (EtOH)	EP 0993	
Heavy Metals	≤ 10 ppm	
<u>Microbiological Specifications</u>		
Total Aerobic (CFU/g)	≤ 100 CFU/g	
Mold and Yeast (CFU/g)	≤ 100 CFU/g	
Endotoxin Level	≤ 1.0 EU/mg	

Storage: Maintain in 4°C containment.

Non-GMO: This product is derived from a non-GMO vegetal source as designated under EP regulations 1829/2003 and 1830/2003.

TSE/BSE: PhytoChol® is derived from a vegetal source. During production, storage and transport, all contact with any material of animal origin was excluded. Therefore, the requirements set forth in *Ph. Eur.* 5.2.8, do not apply.

US FDA DMF No.: 27020