

[Jump to Website](#)

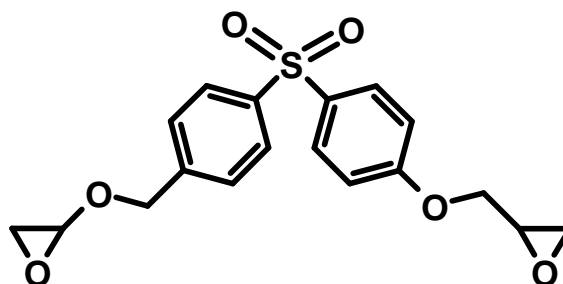
[Request Quote](#)

## Product Specifications

### Bisphenol S Diglycidyl Ether

CAS 3878-43-1

Structure:



Mol. Formula  
Source

C<sub>18</sub>H<sub>18</sub>O<sub>6</sub>S  
Synthetic

Mol. Wt.

362.40

---

*Test*

*Specification*

---

Identity	IR
Appearance	White microcryst. solid
Mp	166-168°C [Lit.] <sup>‡</sup>
Assay (hplc)	> 98%
LOD	< 0.5%
Heavy metals	< 10 ppm

---

*Storage:* Maintain in cool, dry containment.

<sup>‡</sup> *Die Angewandte Makromolekulare Chemie* **199** (1992) 171-190