

[Jump to Website](#)

[Request Quote](#)

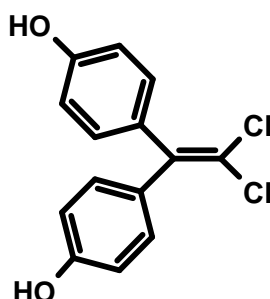
Product Specifications

Bisphenol C 2

CAS 14868-03-2

Syn: 4,4'-(2,2-dichloroethenylidene)bisphenol; 1,1-Bis(4-hydroxyphenyl)-2,2-dichloroethylene; 1,1-Bis(p-hydroxyphenyl)-2,2-dichloroethylene; 1,1-Dichloro-2,2-bis(4-hydroxyphenyl)ethene; 1,1-Dichloro-2,2-bis(p-hydroxyphenyl)ethylene; 2,2-Bis(4-hydroxyphenyl)-1,1-dichloroethene; 2,2-Bis(4-hydroxyphenyl)-1,1-dichloroethylene; 2,2-Dichloro-1,1-bis(4-hydroxyphenyl)ethylene; 4,4'-(Dichlorovinylidene)diphenol; Bis(4-hydroxyphenyl)-2,2-dichloroethylene

Structure:



Mol. Formula
Source

C₁₄H₁₀Cl₂O₂
Synthetic

Mol. Wt.

281.14

Test

Specification

Identity	Infrared, H-NMR
Appearance	White to off-white microcryst. solid
Mp	213– 217°C [Lit.]
Assay (hplc)	> 98%
LOD (80 °C, 2 Hr)	< 0.5 %
pH (1% suspension in H ₂ O)	6.5 – 7.5
Water (K-F)	< 0.5 %
Ash (residue on ignition)	< 0.2%
Heavy metals	< 10 ppm
Free phenol	≤ 0.2 %.

Storage: Maintain in cool, dry containment.

Wilshire Technologies

TEL: +1- 609-683-1117