

[Jump to Website](#)

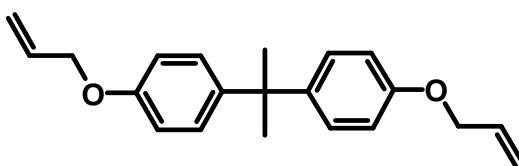
[Request Quote](#)

## Product Specifications

### **Bisphenol A Diallyl Ether**

**CAS** 3739-67-1

**Structure:**



**Mol. Formula**  
**Source**

**C<sub>21</sub>H<sub>24</sub>O<sub>2</sub>**  
*Synthetic*

**Mol. Wt.**

308.41

<i>Test</i>	<i>Specification</i>
<b>Identity</b>	IR
<b>Appearance</b>	Pale-yellow liquid
<b>Bp</b>	220 °C/0.05 mmHg
<b>Assay</b> (hplc)	
Bisphenol A Diallyl Ether	≥ 85 %
Diallyl Bisphenol A	≤ 5%
Bisphenol A Monoallyl Ether	≤ 7%
2-Allyl-Bisphenol A Diallyl Ether	≤ 8%
<b>Heavy metals</b>	< 10 ppm
<b>d<sub>20</sub> °C</b>	0.960 g/mL
<b>RI, n<sub>D</sub><sup>20</sup> °C</b>	1.5648 [Lit]
<b>Fp</b>	155.3 °C

*Storage:* Maintain in cool, dry containment.