

[Jump to Website](#)

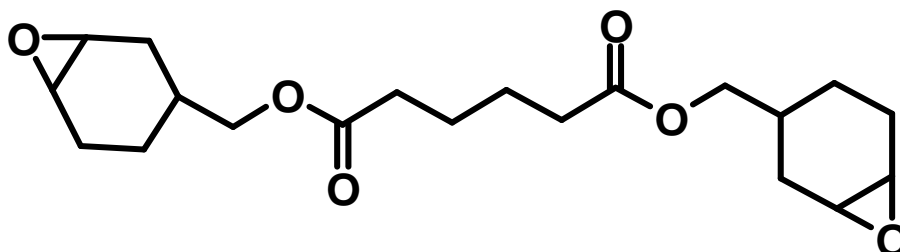
[Request Quote](#)

## Product Specifications

### **Bis(3,4-epoxycyclohexylmethyl)adipate**

CAS 3130-19-6

Structure:



Mol. Formula  
Source

$C_{20}H_{30}O_6$   
Synthetic

Mol. Wt.

366.45

*Test*

*Specification*

<b>Identity</b>	IR	
<b>Appearance</b>	Light-yellow viscous liquid	
<b>Assay (glpc)</b>	≥ 90%	≥ 98%
<b>Color, PT/Co</b>	< 100	< 100
<b>Chloride</b>	< 500 ppm	< 100 ppm
<b>Epoxy Equivalent</b>	190-215 g/mol	190-215 g/mol
<b>Moisture</b>	< 0.2%	< 0.2%
<b>Viscosity, <math>\eta</math> @ 25 °C</b>	400-750 cps	400-750 cps

*Storage:* Maintain in cool, dry containment.