

[Jump to Website](#)

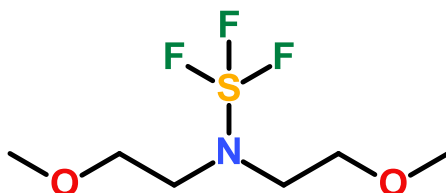
[Request Quote](#)

Product Specifications

Bis(2-methoxyethyl)aminosulphurtrifluoride

CAS 202289-38-1

Structure:



Mol. Formula (CH₃OCH₂CH₂)₂NSF₃
Source Synthetic

Mol. Wt. 221.24

| <i>Test</i> | <i>Specification</i> |
|-----------------------------------|------------------------|
| Identity | IR |
| Appearance | Yellow to brown liquid |
| Bp | 256.3 °C /760 mmHg |
| Purity (glpc) | > 98% |
| Moisture (K-F) | < 0.5% |
| $d_{20}^{\circ\text{C}}$ | 1.9 g/mL |
| RI, $\eta_D^{20}^{\circ\text{C}}$ | N/A |
| Fp | 108 °C |

Storage: Maintain in cool, dry containment. HAZMAT! UN 3094 4.3(8) /PG I