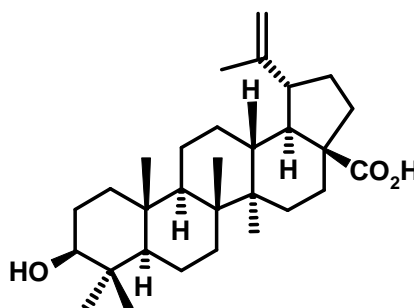


[Jump to Website](#)[Request Quote](#)

Product Specifications

Betulinic Acid (*all-natural*)

CAS 472-15-1**Syn:** 3-Hydroxy-(3 β)-lup-20(29)-en-28-oic Acid; 3 α H-Cyclopenta[a]chrysene; Mairin; Betulic Acid; (+)-Betulinic Acid; 3 β -Hydroxylup-20(29)-en-28-oic Acid**Structure:****Mol. Formula****C₃₀H₄₈O₃****Mol. Wt.**

456.7

Source*Betula pendula* (Silver Birch); bark

<i>Test</i>	<i>Specification</i>
Identity	IR, NMR
Appearance	White / off-white microcryst powdr
Particle Size (AOAC 973.03)	98% pass through 60 mesh
Mp	> 300 °C
Specific Rotation, [α]_D²⁰	≥ 9° (c=0.1 g/100 mL, CHCl ₃)
Assay (hplc, area %)	≥ 99%
Impurities	
Oleanolic Acid	≤ 0.2%
Betulin	0.2-0.3%
Other	≤ 0.1% (per single impurity)
Heavy Metals (USP33)	
Pb (AAS)	≤ 5 ppm
As (AAS)	≤ 1 ppm
LOD (USP33)	≤ 1.0%
Sulfated Ash (USP33)	≤ 0.2%

- cont'd -

- cont'd -

<i>Test</i>	<i>Specification</i>
Residual Solvent(s)	
Ethanol / n-Propanol	≤ 1000 ppm
<u>Microbiological Specifications</u>	
Total Aerobic (USP33)	≤100 (CFU/g)
<i>E. Coli</i> (USP33)	Negative
<i>Salmonella</i> (USP33)	Negative
Mold and Yeast (USP33)	≤100 (CFU/g)

Storage: Maintain in cool, dry containment.