

[Jump to Website](#)

[Request Quote](#)

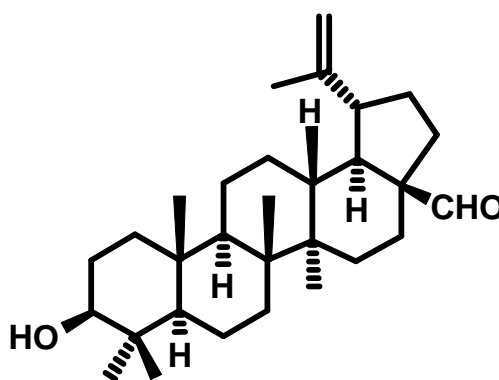
Product Specifications

Betulin Aldehyde

CAS 13159-28-9

Syn: Betulinal; Betunal; Lup-20(29)-en-28-al

Structure:



Mol. Formula
Source

$C_{30}H_{48}O_2$
Betula pendula (Silver Birch bark)

Mol. Wt.

440.7

<i>Test</i>	<i>Specification</i>
Identity	NMR
Appearance	White microcryst. powder
Mp	189-193 °C [Lit.]
Assay (hplc)	≥ 98 %
Sp. Rot., $[\alpha]_D$	+18.4° (c=0.4, CHCl ₃) [Lit.]
LOD	< 1%
Ash (residue on ignition)	< 0.2%
Heavy metals	< 10 ppm

Storage: Maintain in cool, dry, dark containment