

[Jump to Website](#)

[Request Quote](#)

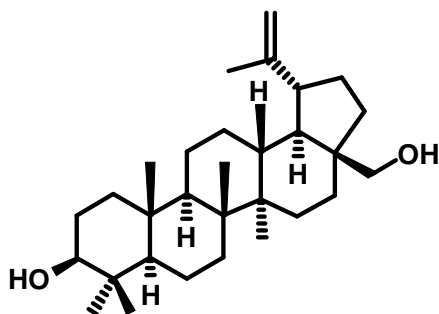
Product Specifications

BETULIN (BETULINOL)

CAS 473-98-3

Syn: Lup-20(29)-ene-3,28-diol; Lup-20(30)-ene-3 β ,28-diol; Betulol

Structure:



Mol. Formula
Source

C₃₀H₅₀O₂
Betula pendula (Silver Birch bark)

Mol. Wt.

442.7

<i>Test</i>	<i>Specification</i>
Identity	IR
Appearance	White microcryst. powder
Mp	248 – 251 °C (Lit.)
Assay (hplc, area%)	≥ 99%; ≥ 98%; ≥ 90%
Impurities	
Oleanolic Acid	≤ 0.2%
Betulinic Acid	≤ 0.1%
Betulin Aldehyde	≤ 0.1%
Other	≤ 0.1% (per single impurity)
Sp. Rot., [α]_D	+20 ° (c = 2, py) [Lit.]
LOD	< 1%
Ash (residue on ignition)	< 0.2%
Heavy metals	< 10 ppm

Storage: Maintain in cool, dry, dark containment