

[Jump to Website](#)

[Request Quote](#)

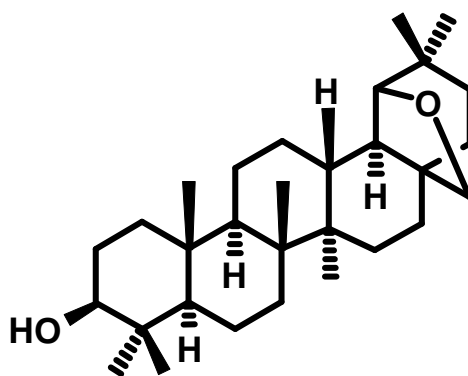
Product Specifications

Allobetulin

CAS 1617-72-7

Syn: (18 α)-19 β ,28-Epoxyoleanan-3 β -ol

Structure:



Mol. Formula
Source

$C_{30}H_{48}O_2$
Betula pendula (Silver Birch bark)

Mol. Wt.

440.7

<i>Test</i>	<i>Specification</i>
Identity	IR
Appearance	White microcryst. powder
Mp	264-266 °C [Lit.]
Assay (hplc)	≥ 98 %
Sp. Rot., [α] _D	+48-50° (CHCl ₃) [Lit.]
LOD	< 1%
Ash (residue on ignition)	< 0.2%
Heavy metals	< 10 ppm

Storage: Maintain in cool, dry, dark containment