

[Jump to Website](#)

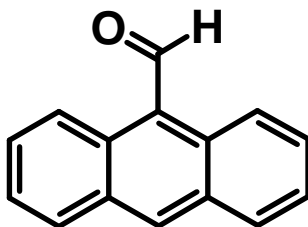
[Request Quote](#)

Product Specifications

9-Anthraldehyde

CAS 642-31-9

Structure:



Mol. Formula
Source

$C_{15}H_{10}O$
Synthetic

Mol. Wt.

206.25

<i>Test</i>	<i>Specification</i>
Appearance	Yellow crystal
Mp	103-104 °C
Assay (hplc)	≥ 99%
LOD	< 0.5%
Ash	< 0.2%
Heavy Metals	< 10 ppm

Storage: Maintain in cool, dry containment.