

[Jump to Website](#)

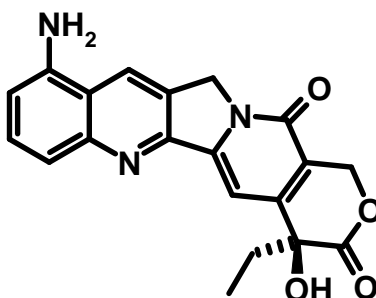
[Request Quote](#)

## Product Specifications

### 9-Aminocamptothecin

CAS 91421-43-1

Structure:



Mol. Formula

C<sub>20</sub>H<sub>17</sub>N<sub>3</sub>O<sub>4</sub>

Mol. Wt.

363.37  
(anhydrous)

Source

Synthetic

<i>Test</i>	<i>Specification</i>
Appearance	Yellow powder
Mp	≥ 300 °C (dec.)
Assay (hplc)	> 98%
Sp. Rot., [α] <sub>D</sub>	< -12 °(0.28 g, DMF)
LOD	< 3 %
Ash (residue on ignition)	< 0.3%
Heavy metals	< 10 ppm

*Storage:* Maintain in cool, dry containment. Avoid light.