

[Jump to Website](#)

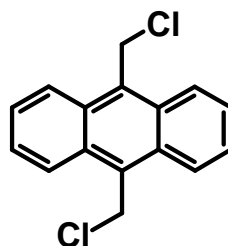
[Request Quote](#)

## Product Specifications

### 9,10-Bis(chloromethyl)anthracene

CAS 10387-13-0

Structure:



Mol. Formula  
Source

$C_{16}H_{12}Cl_2$   
Synthetic

Mol. Wt.

275.18

---

---

#### *Test*

#### *Specification*

---

---

Identity	IR
Appearance	Yellow crystals
Mp	258-260 °C [Lit.]
Assay (hplc)	> 98 %
LOD	< 0.3%
Ash (residue on ignition)	< 0.2%
Heavy metals	< 10 ppm

---

*Storage:* Maintain in cool, dry containment.

*CAUTION:* Strong lachrymator