

[Jump to Website](#)

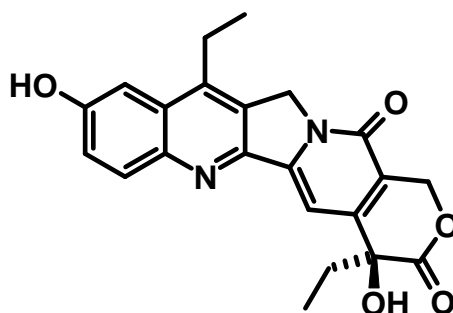
[Request Quote](#)

Product Specifications

7-Ethyl-10-hydroxycamptothecin

CAS 86639-52-3

Structure:



Mol. Formula	$C_{22}H_{20}N_2O_5$	Mol. Wt.	392.40 (anhydrous)
Source	Synthetic		

<i>Test</i>	<i>Specification</i>
Appearance	Pale-yellow, microcryst. powder
Mp	230-231 °C (dec.) (<i>anhyd.</i>)
Assay (hplc)	> 98%
Sp. Rot., $[\alpha]_D$	> 28° (0.45 g; CH ₂ Cl ₂ : MeOH, 1:1)
LOD	< 2 %
Ash (residue on ignition)	< 0.2%
Heavy metals	< 10 ppm
Total Impurities	< 1.0%

Storage: Maintain in cool, dry containment.