

[Jump to Website](#)

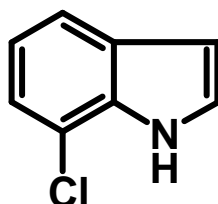
[Request Quote](#)

## Product Specifications

### 7-Chloroindole

CAS 53924-05-3

Structure:



Mol. Formula  
Source

$C_8H_6ClN$   
Synthetic

Mol. Wt.

151.59

---

---

<i>Test</i>	<i>Specification</i>
-------------	----------------------

Identity	IR
Appearance	Off-white microcrystalline solid
Bp	90-95 °C @ 0.25 mm Hg (Lit.)
Mp	55-58 °C (Lit.)
Assay	> 98%
Moisture	< 0.5%
Ash (residue on ignition)	< 0.2%
Heavy metals	< 10 ppm

---

*Storage:* Maintain in cool, dry containment.