

[Jump to Website](#)

[Request Quote](#)

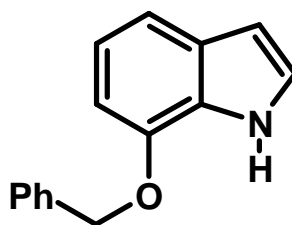
Product Specifications

7-Benzoyloxyindole

CAS 20289-27-4

Syn: 7-Benzoyloxy-1H-indole

Structure:



Mol. Formula
Source

$C_{15}H_{13}NO$
Synthetic

Mol. Wt.

223.17

Test

Specification

Identity	IR
Appearance	White to off-white solid
Mp	67-70 °C
Assay (hplc)	> 98%
Moisture (K-F)	< 0.5%
Ash (residue on ignition)	< 0.2%
Heavy metals	< 10 ppm

Storage: Avoid strong light and maintain in cool, dry containment.