

[Jump to Website](#)

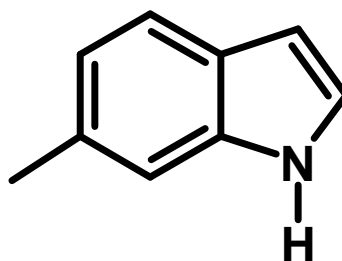
[Request Quote](#)

Product Specifications

6-Methylindole

CAS 3420-02-8

Structure:



Mol. Formula
Source

C₉H₉N
Synthetic

Mol. Wt.

131.17

<i>Test</i>	<i>Specification</i>
Identity	IR
Appearance	Pale-yellow viscous liquid or off-white cast solid
Bp	112-113 °C / 5 mm Hg
Mp	27-31 °C
Assay (glpc)	> 99%
RI, $\eta_D^{30\text{ }^\circ\text{C}}$	1.607
Fp	> 230 °F

Caution: Protect from light and oxygen