

[Jump to Website](#)

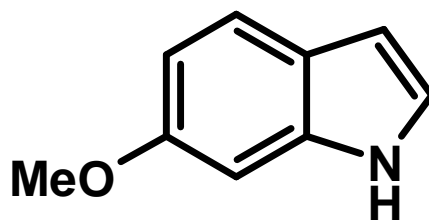
[Request Quote](#)

Product Specifications

6-Methoxyindole

CAS 3189-13-7

Structure:



Mol. Formula
Source

C₉H₉NO
Synthetic

Mol. Wt.

147.17

Test

Specification

Identity	IR
Appearance	White to off-white to beige microcryst. solid
Mp	90-92 °C (Lit.)
Assay	> 98%
Moisture	< 1%
Ash (residue on ignition)	< 0.3%
Heavy metals	< 10 ppm

Storage: Maintain in cool, dry containment.