

[Jump to Website](#)

[Request Quote](#)

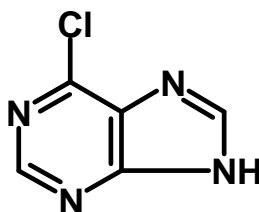
Product Specifications

6-Chloropurine

CAS 87-42-3

Syn: 6-Chloro-1H-purine; 6-Chloro-9H-purine

Structure:



Mol. Formula
Source

C₅H₃ClN₄
Synthetic

Mol. Wt.

154.56

<i>Test</i>	<i>Specification</i>
Appearance	White to pale-yellow microcryst. solid
Mp	> 300 °C
Assay (hplc)	≥ 99 %
LOD	< 0.5%
Ash (residue on ignition)	< 0.1%
Heavy metals	< 10 ppm (Pb) < 1 ppm (As)

Storage: Maintain in cool, dry containment.