

[Jump to Website](#)

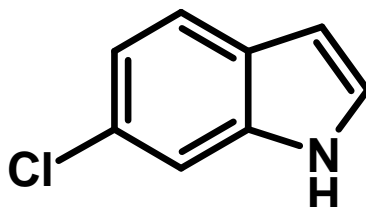
[Request Quote](#)

Product Specifications

6-Chloroindole

CAS 17422-33-2

Structure:



Mol. Formula
Source

C_8H_6ClN
Synthetic

Mol. Wt.

151.59

<i>Test</i>	<i>Specification</i>
Identity	IR
Appearance	White / off-white to beige colored solid
Mp	87-90 °C (Lit.)
Assay	> 99%
Moisture (K-F)	< 1%
Ash (residue on ignition)	< 0.2 %
Heavy metals	< 10 ppm

Storage: Maintain in cool, dry containment.