

[Jump to Website](#)

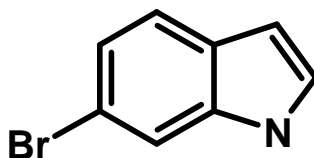
[Request Quote](#)

Product Specifications

6-Bromoindole

CAS 52415-29-9

Structure:



Mol. Formula
Source

C_8H_6BrN
Synthetic

Mol. Wt.

196.04

Test

Specification

| | |
|---------------------------|----------------------------|
| Identity | IR |
| Appearance | Beige to rust-orange solid |
| Mp | 92-96 °C (Lit.) |
| Assay | > 97% |
| Moisture (K-F) | < 1% |
| Ash (residue on ignition) | < 0.3% |
| Heavy metals | < 10 ppm |

Storage: Maintain in cool, dry containment.