

[Jump to Website](#)

[Request Quote](#)

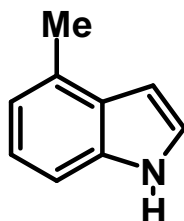
## Product Specifications

### 4-Methylindole

CAS 16096-32-5

Syn: 4-Methylindole; 4-Methyl-1H-indole

Structure:



Mol. Formula  
Source

C<sub>9</sub>H<sub>9</sub>N  
Synthetic

Mol. Wt.

131.17

---

---

#### *Test*

#### *Specification*

Identity	<sup>1</sup> H-NMR; IR
Appearance	Clear, colorless to pale-yellow liquid
Bp	80-85 °C / 0.5 mm Hg
Assay (hplc)	> 98%
Ash (residue on ignition)	< 0.2%
Heavy metals	< 20 ppm
Fp	> 150 °C

*Storage:* Maintain in DARK, cool, dry containment.