

[Jump to Website](#)

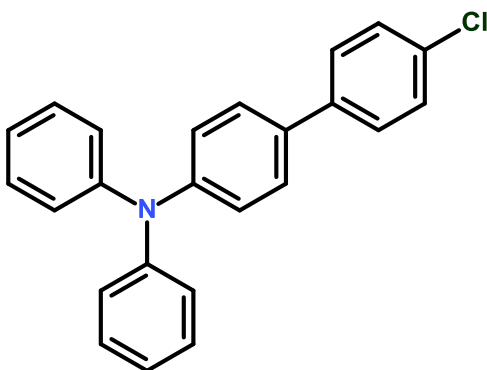
[Request Quote](#)

Product Specifications

4-Chloro-4'-(diphenylamino)biphenyl

CAS 880800-25-9

Structure:



Mol. Formula
Source

C₂₄H₁₈ClN
Synthetic

Mol. Wt.

355.86

<i>Test</i>	<i>Specification</i>
Identity	IR
Appearance	White to off-white microcryst. solid
Purity (hplc)	≥ 98%
LOD	≤ 1%
Ash (residue on ignition)	≤ 0.2%
Heavy metals	≤ 10ppm

Storage: Maintain in cool, dry containment.