

[Jump to Website](#)

[Request Quote](#)

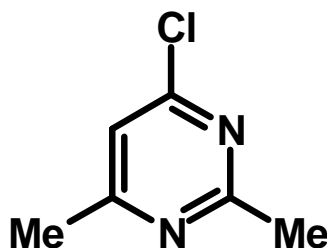
Product Specifications

4-Chloro-2,6-dimethylpyrimidine

CAS 4472-45-1

Syn: 2,6-Dimethyl-4-chloropyrimidine; 6-Chloro-2,4-dimethylpyrimidine

Structure:



Mol. Formula
Source

$C_6H_7ClN_2$
Synthetic

Mol. Wt.

142.58

Test

Specification

Identity	IR
Appearance	Off-white to pale-yellow cast solid
Bp	80-82 °C / 22 mm Hg
Mp	38-40 °C
Assay (glpc)	> 98%
Moisture (K-F)	< 0.5%
Sulfate Ash (residue on ignition)	< 0.1%
Heavy metals	< 10 ppm

Storage: Maintain in cool, dry containment.