

[Jump to Website](#)

[Request Quote](#)

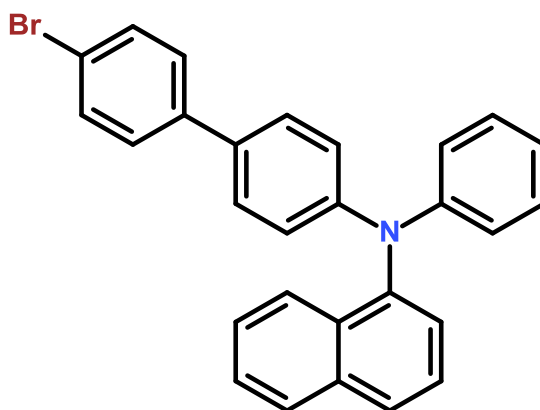
Product Specifications

4-[N-(1-Naphthyl)-N-phenylamino]-4'-bromobiphenyl

CAS 352359-42-3

Syn: *N-(4'-Bromo-1,1'-biphenyl-4-yl)-N-phenyl-1-naphthalenamine*

Structure:



Mol. Formula
Source

$C_{28}H_{20}BrN$
Synthetic

Mol. Wt.

450.37

<i>Test</i>	<i>Specification</i>
Identity	IR
Appearance	White to off-white microcryst. solid
Mp	167.0 to 171.0 °C
Purity (hplc)	≥ 99%
LOD	≤ 1%
Ash (residue on ignition)	≤ 0.2%
Heavy metals	≤ 10ppm

Storage: Maintain in cool, dry containment.