

[Jump to Website](#)

[Request Quote](#)

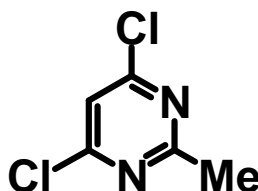
Product Specifications

4,6-Dichloro-2-methylpyrimidine

CAS 1780-26-3

Syn: 2-Methyl-4,6-dichloropyrimidine

Structure:



Mol. Formula
Source

C₅H₄Cl₂N₂
Synthetic

Mol. Wt.

163.00

Test

Specification

Identity	IR
Appearance	Off-white cast solid
Mp	41.5-45.5 °C [Lit.]
Assay	> 98%
Moisture (K-F)	< 0.5%
Sulfate Ash (residue on ignition)	< 0.2%
Heavy metals	< 10 ppm
Fp	208 °F

Storage: Maintain in cool, dry containment.