

[Jump to Website](#)

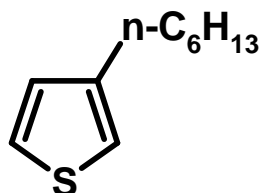
[Request Quote](#)

Product Specifications

3-Hexylthiophene

CAS 1693-86-3

Structure:



Mol. Formula
Source

C₁₀H₁₆S
Synthetic

Mol. Wt.

168.3

<i>Test</i>	<i>Specification</i>
Identity	Infrared
Appearance	Clear, colorless to pale-yellow liquid
Assay (glpc)	> 98 %
$d_{20}^{\circ\text{C}}$	1.002 g/mL (Lit.)
RI, $\eta_D^{20}^{\circ\text{C}}$	1.579 (Lit.)
Fp	100 °F

Caution: Flammable liquid ! Store and handle accordingly.