

[Jump to Website](#)

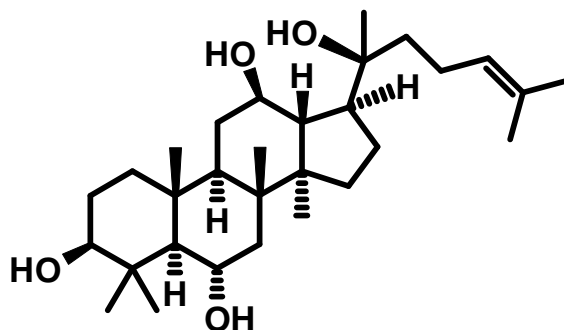
[Request Quote](#)

## Product Specifications

### 20(S)-Protopanaxatriol

CAS 34080-08-5

Structure:



Mol. Formula  
Source

$C_{30}H_{50}O_4$   
*Panax ginseng* C.A. Mey., Araliaceae  
(isolated from flower)

Mol. Wt.

474.72

<i>Test</i>	<i>Specification</i>
Identity	IR
Appearance	White powder
Mp	N/A
Assay (hplc; TLC)	≥ 98 %
Sp. Rot., $[\alpha]_D$	N/A
LOD	< 0.5 %
Ash (residue on ignition)	< 0.2 %
Heavy metals	< 10 ppm

*Storage:* Maintain in cool, dry containment.

**Wilshire Technologies**

**TEL: +1- 609-683-1117**