

[Jump to Website](#)

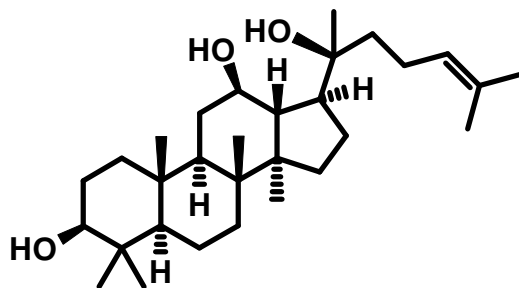
[Request Quote](#)

## Product Specifications

### 20(*S*)-Protopanaxadiol

CAS 30636-90-9

Structure:



Mol. Formula  
Source

$C_{30}H_{52}O_3$   
*Panax ginseng* C.A. Mey., Araliaceae  
(isolated from flower)

Mol. Wt.

460.73

---

---

<i>Test</i>	<i>Specification</i>
-------------	----------------------

Identity	IR
Appearance	White powder
Mp	197-198 °C [Lit.]
Assay (hplc)	≥ 98 %
Sp. Rot., [α] <sub>D</sub>	+21° (c = 1.0; CHCl <sub>3</sub> )
LOD	< 0.5 %
Ash (residue on ignition)	< 0.1 %
Heavy metals	< 10 ppm

---

*Storage:* Maintain in cool, dry containment.