

[Jump to Website](#)

[Request Quote](#)

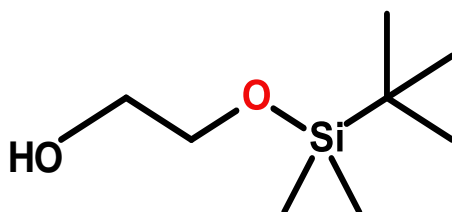
Product Specifications

2-*tert*-Butyldimethylsilyloxyethanol

CAS 102229-10-7

Syn: 2-[(*tert*-Butyldimethylsilyl)oxy]-1-ethanol; 2-[[[(1,1-Dimethylethyl)dimethylsilyl]oxy]ethanol

Structure:



Mol. Formula
Source

$C_8H_{20}O_2Si$
Synthetic

Mol. Wt.

176.33

Test

Specification

Identity

IR

Appearance

Colorless liquid

Bp

74-80 °C / 17 mmHg (lit.)

Purity (glpc)

> 97%

Storage: Maintain in cool, dry containment.