

[Jump to Website](#)

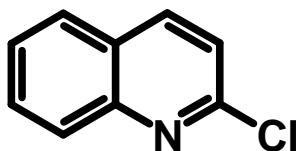
[Request Quote](#)

Product Specifications

2-Chloroquinoline

CAS 612-62-4

Structure:



Mol. Formula
Source

C_9H_6ClN
Synthetic

Mol. Wt.

163.6

| <i>Test</i> | <i>Specification</i> |
|----------------------------------|-------------------------------------|
| Appearance | Off-white to grey microcryst. solid |
| Mp | 161-164 °C |
| Assay (hplc) | > 99% |
| LOD | < 0.5% |
| Ash (residue on ignition) | < 0.3 % |
| Heavy metals | < 10 ppm |

Storage: Maintain in cool, dry, dark containment.